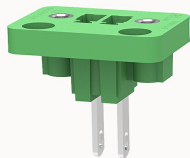


## Overview

### Product information



**15CDGV-3.81-10030000001**

Pluggable terminal blocks, Rated current: 7A. Rated voltage  
( II / 2 ) : 250V, pitch: 3.81mm, Color: green, Contact surface : Tin

### Product advantages

- ☒ Adapt to multi-type plugs, device design is highly flexible
- ☒ Through-wall installation, free positioning

### Product certification



## Technical data

### Product drawing

### 3D model

□

### Processing notes

Process

Wave soldering/manual soldering

### Electrical parameters UL

Rated voltage (B)	300V
Rated voltage (D)	300V
Rated current (B)	8A
Rated current (D)	8A

### Electrical parameters IEC

Rated voltage	250V
Rated current	7A

Rated voltage(II/2)	250V
Rated surge voltage(II/2)	2.5KV

#### Item properties

Connection direction	0°
Type of installation	PCB welding
Pin arrangement	Single row in a straight line
Pitch	3.81mm
Number of potentials	2
Pluggable or not	Yes
Number of rows	1

#### Material data

Environmental items	Compliant with REACH/RoHS
Contact material	Copper alloy
Contact zone metal surface	tin-plated
Insulation Materials	PA66
Insulating material group	I
Flammability rating	UL94V-0

#### Mechanical tests

Test Specification	IEC60947/UL1059
--------------------	-----------------

#### Environmental data

Ambient temperature (operation)	-40℃~105℃(depending on derating curve)
---------------------------------	--

#### Accessories

##### Tool

Screwdriver	/
-------------	---

Operating tool	/
----------------	---

Accessories

Coding strip	/
Bridge	/
Marking strip	/
Others	15EDG-PWI

Business data

Order number	10030000001
Packing unit	100
Minimum order quantity	30
Products weight (without packaging)	1.375