

# PT Series


## Sealed Power Toggle Switches



### Specifications

<b>UL Electrical Ratings</b>	UL 61058-1
<b>Maintained Functions</b>	15A GP, 277 VAC 50/60Hz T85 15(4)A, 277 VAC 50/60Hz T85 ½ hp, 125 VAC 50/60Hz T85 1 hp, 250 VAC 50/60Hz T85
<b>Momentary Functions</b>	10A GP, 277 VAC 50/60Hz T85 10(4)A, 277 VAC 50/60Hz T85 1/4 hp, 125 VAC 50/60Hz T85 1/2 hp, 250 VAC 50/60Hz T85
<b>Electrical Life</b>	10,000 cycles
<b>DC Electrical Ratings</b>	Resistive Loads
<b>All Functions</b>	Up to 25A, 24 VDC 0.75A, 125 VDC 0.5A, 250 VDC
<b>Maintained Functions</b>	15A, 28 VDC
<b>Momentary Functions</b>	10A, 28 VDC
<b>Dielectric Strength</b>	2500 V min. initial (terminal to toggle)
<b>Insulation Resistance</b>	1000 MΩ min. initial
<b>Contact Resistance</b>	50 mΩ max. Initial (terminal to toggle)
<b>Operating and Storage Temperature</b>	-40°C to 85°C
<b>IP Ratings</b>	IP66/IP68 Versatile

### Agency Approvals

Agency	Agency File Number
	E42363

**Note:**  
cURus for Single Pole (S101-S108) models only

### Description

The PT series is ideal as a rugged, panel mount, multi-function switch for harsh, dirty, dusty, and wet conditions. The PT series sealed power toggle with patented single piece injection molded panel and toggle seal is suited to the performance requirements for off-road construction, agricultural, material handling, and industrial equipment. The PT sealed power toggle has a versatile IP66/IP68 seal rating, electrical rating at 15 amps for maintained functions and 10 amps for momentary functions, and is IEC/UL 61058-1 certified.

### Features & Benefits

- IP66/IP68 versatile rating to withstand harsh outdoor environments, intense, wet weather, wind blown rain, dirt
- UL 61058-1 certified has global acceptance with no additional testing needed
- Integrated panel seal for extra protection
- Superior oil and fuel resistance
- High strength, heat resistant housing designed for demanding applications subjected to vibration and harsh conditions

### Applications

- Off-road, construction/ agricultural vehicles
- Articulating, scissor, and bucket lift controls
- Outdoor industrial equipment
- Lift gate controls
- Material handling equipment

### Materials

<b>Case</b>	Thermoset
<b>Actuator/Pivot Pin</b>	Stainless Steel
<b>Bushing</b>	Zinc Die Cast
<b>Seal</b>	Silicone
<b>Movable Contact(s)</b>	Copper alloy, silver plated
<b>Buttons</b>	Silver Cadmium
<b>Terminals</b>	Brass for quick connect and screw terminals. Brass with silver plated for solder lug.
<b>Hardware</b>	Hex nut & locking ring: brass, nickel plated Screws: brass Lock washer: brass, nickel plated
<b>Packaging</b>	Trays

# PT Series

## Sealed Power Toggle Switches



### Ordering Number

To order, simply select desired option from each category and place in the appropriate box. For additional options not shown in catalog, consult Customer Service Center.

### PTxxx - S - x - x

#### Switch Function

**PT101:** SP On-None-On  
**PT102:** SP On-None-Off  
**PT103:** SP On-Off-On  
**PT105:** SP Mom-Off-Mom  
**PT107:** SP On-Off-Mom  
**PT108:** SP On-None-Mom  
**PT201:** DP On-None-On  
**PT202:** DP On-None-Off  
**PT203:** DP On-Off-On  
**PT205:** DP Mom-Off-Mom  
**PT207:** DP On-Off-Mom  
**PT208:** DP On-None-Mom

#### Contact Material

**Q:** Stnadard<sup>1</sup>

#### Terminals

**S:** Screw terminal  
**Q:** Quick connect 0.250"  
**Z:** Solder lug

#### Actuator

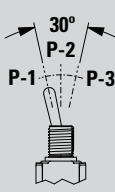
**S:** Standard

#### Notes:

<sup>1</sup> Brass for S and Q terminal options  
 Brass with silver plating for Z terminal option

### Switch Function

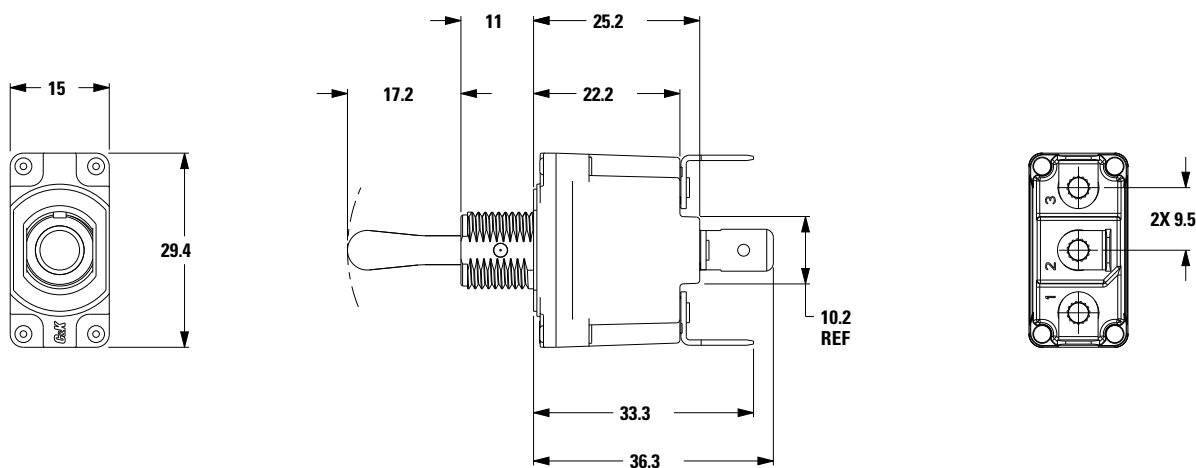
#### SP

	No. Poles	Model No.	Switch Function			Connected Terminals			Schematic
			POS. 1	POS. 2	POS. 3	POS. 1	POS. 2	POS. 3	
SP		PT101	ON	NONE	ON	2-3	N/A	2-1	
		PT102 <sup>1</sup>			OFF			OPEN	
		PT103	MOM	OFF	ON	2-3	OPEN	2-1	
		PT105		OFF	MOM		OPEN	2-1	
		PT107		OFF	MOM		OPEN	2-1	
		PT108		NONE	MOM		N/A	2-1	

#### Notes:

<sup>1</sup> PT102 OMIT Terminal 1

### Dimensions (mm)



# PT Series

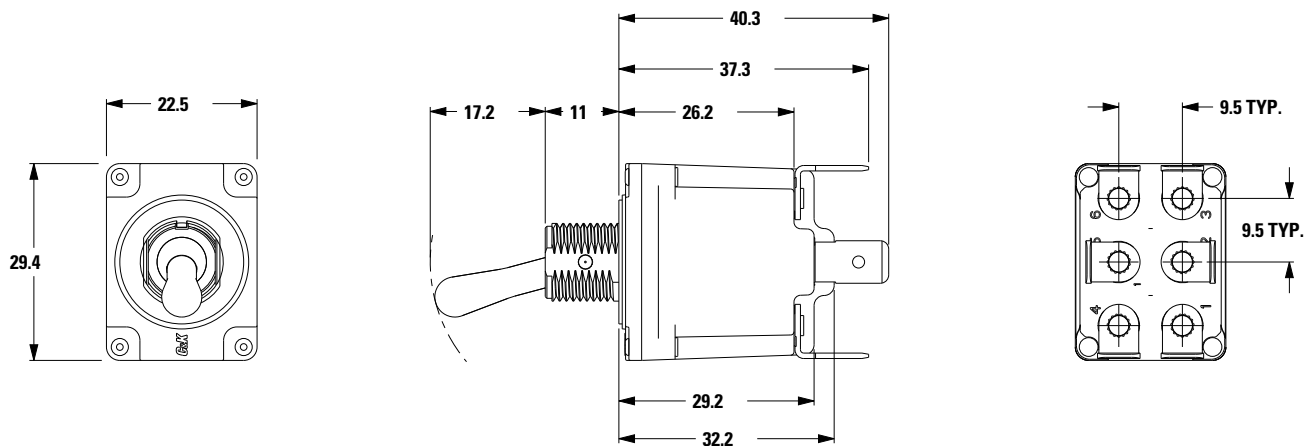
## Sealed Power Toggle Switches



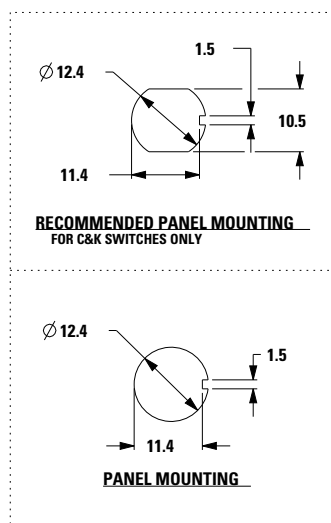
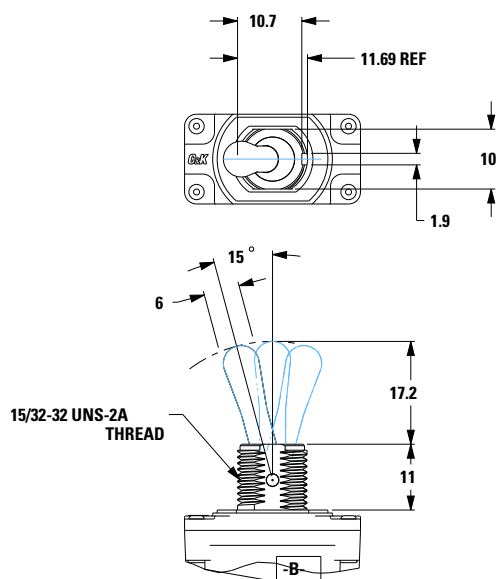
### DP

	No. Poles	Model No.	Switch Function			Connected Terminals			Schematic
			POS. 1	POS. 2	POS. 3	POS. 1	POS. 2	POS. 3	
	DP	PT201			ON	2-3, 5-6	N/A	2-1, 4-5	
		PT202 <sup>1</sup>	ON	NONE	OFF			OPEN	
		PT203		OFF	ON		OPEN	2-1, 4-5	
		PT205	MOM	OFF	MOM		OPEN	2-1, 4-5	
		PT207		OFF	MOM		OPEN	2-1, 4-5	
		PT208	ON	NONE			N/A	2-1, 4-5	

Notes:  
1. PT202 OMIT Terminal 1 and 4



### Actuator S Standard



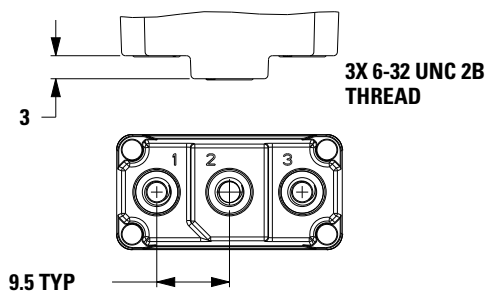
# PT Series

## Sealed Power Toggle Switches



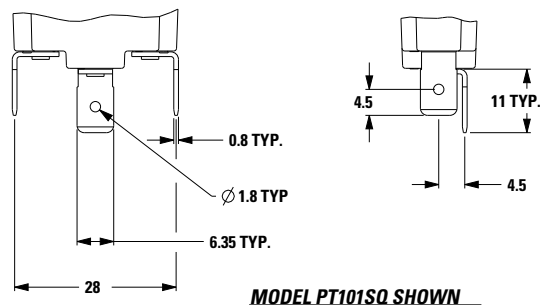
### Terminals

#### S Screw Terminal

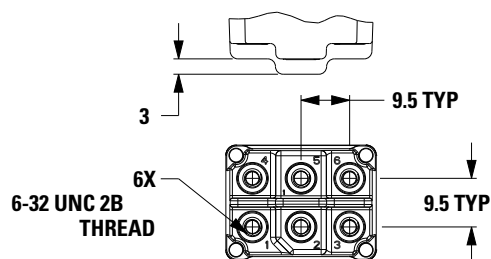


**MODEL PT101SS SHOWN**

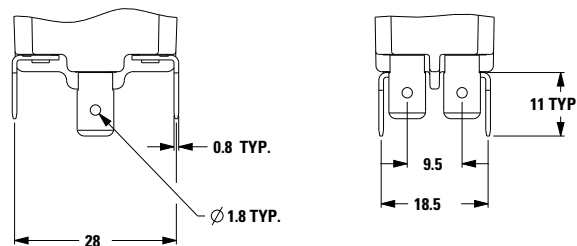
#### Q Quick Connect



**MODEL PT101SQ SHOWN**



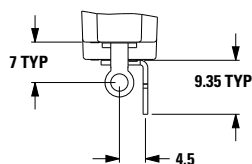
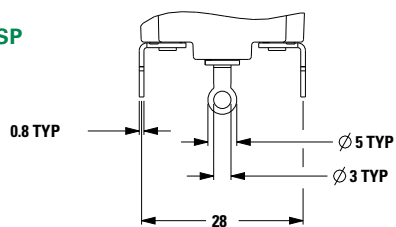
**MODEL PT201SS SHOWN**



**MODEL PT201SQ SHOWN**

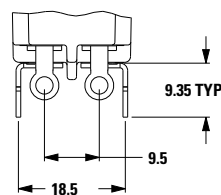
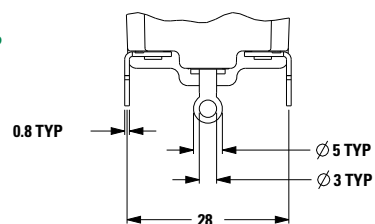
### Z Solder Terminal

#### SP



**MODEL PT101SZ SHOWN**

#### DP



**MODEL PT201SZ SHOWN**

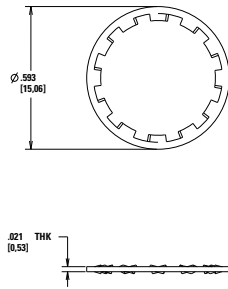
# PT Series

## Sealed Power Toggle Switches



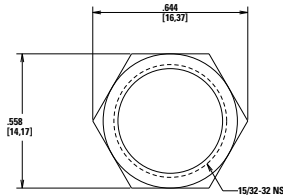
### Mounting Hardware

**Lock Washer**



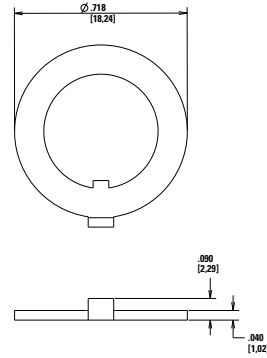
**Part No. 700302202**  
Nickel Plated

**Hex Nut**



**Part No. 707100201**  
Nickel Plated

**Locking Ring**



**Part No. 707200201**  
Nickel Plated with Keyway

**Notes:**

Standard hardware shipped with each switch is 1 piece each.

**Disclaimer Notice** - Information furnished is believed to be accurate and reliable. However, users should independently evaluate the suitability of and test each product selected for their own applications. Littelfuse products are not designed for, and may not be used in, all applications. Read complete Disclaimer Notice at <http://www.littelfuse.com/disclaimer-electronics>.